



New Products

DECEMBER 2024

We are continually expanding our portfolio to meet your research needs. *Check out* the new products released this month!

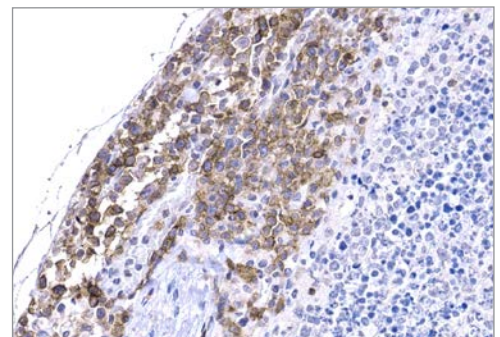
HOT PRODUCTS

Whitlow/218 Linker (F2G3S) Rabbit mAb #47414

Immunohistochemical analysis of CAR-T cells in the tumor microenvironment

CAR-T cells, which have a remarkable effect on blood cancers, have been widely studied in solid tumors. However, there were few tools to histologically analyze the therapeutic effect of CAR-T cell therapy on solid tumors. #47414 overcomes such challenges and is the first product in the CAR linker antibody series that can be used for IHC-P, making it possible to clarify the localization of CAR-T cells in tissues in FFPE samples.

KEYWORDS: CAR-T cells, Solid tumors, Tumor microenvironment



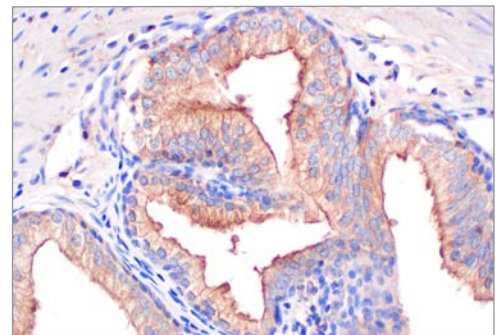
IHC-P: Immunohistochemical analysis of Raji B-Cell lymphoma xenograft in NSG mouse spleen transfused with primary human CAR-T cells targeting CD19 using #47414.

GLIPR2 (F7H7V) Rabbit mAb #86955

GLIPR2: Promising prognostic marker across multiple cancer subtypes

Glioma pathogenesis-related protein 2 (GLIPR2), also known as Golgi-associated PR-1 protein (GAPR-1), is a Golgi-associated protein belonging to the PR-1 protein family. GLIPR2 is expressed in monocytes, macrophages, natural killer (NK) cells, and T cell subsets. GLIPR2 binds Beclin-1 and is a negative regulator of autophagy that inhibits PtdIns3K-C1 complex activity. GLIPR2 promotes epithelial to mesenchymal transition in vitro, and is expressed at high levels in fibrotic kidney. GLIPR2 has been identified as a marker for type 1 migratory dendritic cells (DC1s) and a potential biomarker and tumor suppressor in a pan-cancer analysis.

KEYWORDS: Autophagy, Pan-Cancer, Tumor Suppressor



IHC-P: Immunohistochemical analysis of paraffin-embedded human prostate adenocarcinoma using #86955.



PRODUCT	APPLICATIONS	REACTIVITY
Adhesion/ECM		
78288S CDCP1 (F3M9G) Rabbit mAb	WB, IF-IC, FC-FP	H
78288T		
32431SF EpCAM (D1B3) Rabbit mAb (BSA and Azide Free)	WB, ELISA	H
Apoptosis		
48694SF Phospho-Bad (Ser112) (7E11) Mouse mAb (BSA and Azide Free)	WB, ELISA	H, M, R, Mk
61634SF c-Myc (D5T4A) Rabbit mAb (BSA and Azide Free)	ELISA	H, M, R, Mk
91171SF RIP3 (E1Y9Z) Rabbit mAb (BSA and Azide Free)	ELISA	H
92131SF RIP3 (D8J3L) Rabbit mAb (BSA and Azide Free)	ELISA	M, R
83711SF Survivin (6E4) Mouse mAb (BSA and Azide Free)	WB, ELISA	H, Mk
Autophagy		
20763SF Phospho-Atg13 (Ser355) (D6J1W) Rabbit mAb (BSA and Azide Free)	WB, ELISA	H, (M, R)
99808C PathScan® RP LC3A Sandwich ELISA Kit	ELISA	H, M
Ca, cAMP and Lipid Signaling		
70573S S100A10 (F9U2Z) Rabbit mAb	WB	M
70573T		
Cell Cycle / Checkpoint Control		
49049SF Phospho-Aurora A (Thr288) (C39D8) Rabbit mAb (BSA and Azide Free)	WB, ELISA, IF-IC	H
94244S Bub1 (F5L7L) Rabbit mAb	WB, IP, IF-IC, FC-FP	H
94244T		
20905S Total Cyclin E1 Matched Antibody Pair	ELISA	H
37439SF p16 INK4A (D3W8G) Rabbit mAb (BSA and Azide Free)	WB, ELISA	H
Chromatin Regulation / Nuclear Function		
87655SF ARID1A/BAF250A (D2A8U) Rabbit mAb (BSA and Azide Free)	WB, IHC-P	H, M, R, Mk
58693C FastScan™ AsCpf1/Cas12a (Strain BV3L6) ELISA Kit	ELISA	All
67615SF ATRX (E5X7O) Rabbit mAb (BSA and Azide Free)	WB, IHC-P	H, M, R, Mk
78731SF BRD4 (E8V7I) Rabbit mAb (BSA and Azide Free)	WB, ELISA	H, M, R, Mk
43405SF BRG1 (E3T4S) Rabbit mAb (BSA and Azide Free)	WB, ELISA	H, M, Mk
92865SF Histone H2B (53H3) Mouse mAb (BSA and Azide Free)	WB, ELISA	H, M, R, Mk, Z, (X, B, Hr)
28933SF Histone H3 (D2B12) XP® Rabbit mAb (BSA and Azide Free)	WB, ELISA	H, M, R, Mk, (R, Hm, Mk, C, Dm, X, Z, B)
53138SF Mono-Methyl-Histone H3 (Lys4) (D1A9) XP® Rabbit mAb (BSA and Azide Free)	WB, ELISA, IF-IC, FC-FP	H, M, R, Mk, (Dm)
92075S Tri-Methyl-Histone H3 (Lys27) Matched Antibody Pair	ELISA	H, M, R, Mk
35663S UBF (F2F1O) Rabbit mAb	WB	H, M, R, Mk
35663T		
Cytoskeletal Signaling		
48427S AKAP12 (F4H6G) Rabbit mAb	WB, IF-IC	H, M, R
48427T Keratin 17/19 (D4G2) XP® Rabbit mAb (Alexa Fluor® 488 Conjugate)	IHC-P, IF-F, IF-IC	H, M, R
41413S		
26667S Keratin 17/19 (D4G2) XP® Rabbit mAb (Alexa Fluor® 647 Conjugate)	IHC-P, IF-F, IF-IC	H, M, R
64558S Metavinculin (F3R2D) Rabbit mAb	WB, IP, IHC-P	H
64558T		
75243S PKN3 (F6S5C) Rabbit mAb	WB	H
75243T		
87122S SPTBN1 (F7N2A) Rabbit mAb	WB, IP, FC-FP	H, Mk
87122T		
38459SF Stathmin (D1Y5A) Rabbit mAb (BSA and Azide Free)	WB, IHC-P, IF-IC	H, M, R
28367S Total Vimentin Matched Antibody Pair	ELISA	H, Mk

PRODUCT	APPLICATIONS	REACTIVITY
Developmental Biology		
40506S AUTS2 (F3U1I) Rabbit mAb	WB, IP	H, M
40506T		
84039S ELF3 (F8J2G) Rabbit mAb	WB, IP, IF-IC, ChIP, ChIP-seq	H
84039T		
67260S MEIS1 (E9V1D) Rabbit mAb	WB, IP, ChIP	H, M, R
67260T		
40617S NKX2.5 (E1Y8H) Rabbit mAb (Alexa Fluor® 647 Conjugate)	FC-FP	H
39728S Total NRF2 Matched Antibody Pair	ELISA	H
31289SF Notch1 (5B5) Rat mAb (BSA and Azide Free)	WB, ELISA	H, M, R, B
30819S Total Notch1 Matched Antibody Pair	ELISA	H
83034S PYGO2 (F7N8Z) Rabbit mAb	WB, IP	H, M, R, Mk
83034T		
71460S Phospho-SMAD2 (Ser465/467) Matched Antibody Pair	ELISA	H
20647SF SMAD4 (D8J9F) Rabbit mAb (BSA and Azide Free)	ELISA	H, M, R, Mk
55220S Total Sox2 Matched Antibody Pair	ELISA	H
Immunology and Inflammation		
78000S ASC/TMS1 (F8U7P) Rabbit mAb	WB, IF-IC, FC-FP	H
78000T		
35665S CD47 (E2V9V) Rabbit mAb (Alexa Fluor® 555 Conjugate)	IHC-P	M
45348S CD83 (F9D2B) Rabbit mAb	WB, IP	M
45348T		
26013S CD89/FCAR (F1T9J) Rabbit mAb	WB	H
26013T		
23246S CD206/MRC1 (E6T5J) XP® Rabbit mAb (Alexa Fluor® 750 Conjugate)	IHC-P	H, M, R, Mk
48352S CD206/MRC1 (E2L9N) Rabbit mAb (Alexa Fluor® 555 Conjugate)	IHC-P	H
69179SF Cox2 (E7V6C) Mouse mAb (BSA and Azide Free)	WB, ELISA	H, M, R
97990SF CrkL (D4H6C) Rabbit mAb (BSA and Azide Free)	ELISA	H
97636SF Phospho-CrkL (Tyr207) (E9J5N) Rabbit mAb (BSA and Azide Free)	ELISA	H
82838S EGF (F7W4J) Rabbit mAb	WB	H
82838T		
99106S Eosinophil cationic protein (F3G7N) Rabbit mAb	WB, IHC-P	M
99106T		
86955S GLIPR2 (F7H7V) Rabbit mAb	WB, IHC-P	H, M, R
86955T		
44576S IL-1R2 (F5S6U) Rabbit mAb	WB, IP, FC-FP, FC-L	H
44576T		
48936S Phospho-IFNAR2 (Tyr337) (F4L3O) Rabbit mAb	WB, IP	H
48936T		
76993S Phospho-IFNAR2 (Tyr512) (F6M9J) Rabbit mAb	WB, IP, FC-FP	H, M
76993T		
55079S Phospho-IFNAR2 (Tyr512) (F6M9J) Rabbit mAb (Alexa Fluor® 488 Conjugate)	FC-FP	H, M
57584S Phospho-IFNAR2 (Tyr512) (F6M9J) Rabbit mAb (Alexa Fluor® 647 Conjugate)	FC-FP	H, M
71278SF Phospho-IkBa (Ser32) (I4D4) Rabbit mAb (BSA and Azide Free)	WB, ELISA	H, M, R, Mk, (C, B, Dg, Pg, GP)
58254S Total IRF-3 Matched Antibody Pair	ELISA	H
67782S Phospho-IRF-3 (Ser379) Matched Antibody Pair	ELISA	M
85816S Total Jak2 Matched Antibody Pair	ELISA	H, M
34848S LIF (F6X1X) Rabbit mAb	WB	H
34848T		

PRODUCT	APPLICATIONS	REACTIVITY
Immunology and Inflammation (cont.)		
50411SF PD-L1 (D4H1Z) Rabbit mAb (BSA and Azide Free)	ELISA	M
70443S PD-L1 (F4G6U) Rabbit mAb (PE Conjugate)	FC-FP, FC-L	M
63704S Siglec-7 (F6K8J) Rabbit mAb	FC-FP, FC-L	H
63704T		
91923SF Phospho-SLP-76 (Ser376) Mouse mAb (BSA and Azide Free)	ELISA	H, M
35872S Total Stat6 Matched Antibody Pair	ELISA	H
57159SF Phospho-Stat6 (Tyr641) (D7V3N) Rabbit mAb (BSA and Azide Free)	ELISA	H
20698S PU.1 (E8I8L) Mouse mAb (Alexa Fluor® 647 Conjugate)	FC-FP	H
56401SF TBK1/NAK (E9H5S) Mouse mAb (BSA and Azide Free)	WB, ELISA	H, M, R, (Mk)
16809S TRIF (F6K4E) Rabbit mAb	WB, IP	H
16809T		
44796S TYRP1 (F6Y6N) Rabbit mAb	WB	H, M
44796T		
68693S Whitlow/218 Linker (E3U7Q) Rabbit mAb (Alexa Fluor® 750 Conjugate)	FC-L	All
61479S Whitlow/218 Linker (E3U7Q) Rabbit mAb (mFluor™ Red 780 Conjugate)	FC-L	All
47414S Whitlow/218 Linker (F2G3S) Rabbit mAb	WB, IP, IHC-P	All
47414T		
66149SF Zap-70 (A4E9Z) Mouse mAb (BSA and Azide Free)	ELISA	H
59806SF Zap-70 (L1E5) Mouse mAb (BSA and Azide Free)	WB, ELISA	H
Infectious Diseases		
91484SF SARS-CoV-2 Spike Protein (E7B3E) Rabbit mAb (BSA and Azide Free)	ELISA	Vir
76571S SARS-CoV-2 Spike Protein (F3Q9R) Rabbit mAb	WB, IF-IC	Vir
76571T		
MAP Kinase Signaling		
51398T Elk-1 (F6D8T) Rabbit mAb	WB, IP, ChIP	H, Mk
16282SF c-Fos (E6B9A) Mouse mAb (BSA and Azide Free)	ELISA	H, M, Mk
15676SF JNK2 (S6G8) Rabbit mAb (BSA and Azide Free)	WB, ELISA	H, M, R, Hm, Mk, Mi
Metabolism		
92771SF Phospho-AMPKα (Thr172) (A9S3O) Mouse mAb (BSA and Azide Free)	ELISA	H, M
31775S DEGS1 (F7G2J) Rabbit mAb	WB	H, M, R
31775T		
68106S FTL (F4T8H) Rabbit mAb	WB	H, M, R
68106T		
71407S Glut5 (F4A5K) Rabbit mAb	WB	H
71407T		
40223SF Phospho-IGF-1 Receptor β (Tyr1131)/Insulin Receptor β (Tyr1146) (D6D5L) Rabbit mAb (BSA and Azide Free)	WB, ELISA	H, (M, R)
35702SF Insulin Receptor β (A6H3G) Rabbit mAb (BSA and Azide Free)	WB, ELISA	H
92818SF IRS-1 (S9G8) Rabbit mAb (BSA and Azide Free)	ELISA	H, M, R, (Pg)
46800S Total IRS-1 Matched Antibody Pair	ELISA	H, M, R
99930SF Phospho-IRS-1 (Ser302) (34C7) Rabbit mAb (BSA and Azide Free)	WB, ELISA	H, M
28569S MFSD1 (F2B4C) Rabbit mAb	WB	H
28569T		
Neuroscience		
32354SF β-Amyloid (1-42 Specific) (E6G7S) Rabbit mAb (BSA and Azide Free)	ELISA	H
73799SF Myelin Basic Protein (2H9) Mouse mAb (BSA and Azide Free)	WB, ELISA	H, M, R
53246C PathScan® RP Myelin Basic Protein Sandwich ELISA Kit	ELISA	H, M, R
31053SF Nestin (E6S4P) Mouse mAb (BSA and Azide Free)	ELISA	M

PRODUCT	APPLICATIONS	REACTIVITY
Neuroscience (cont.)		
86100SF Neurofilament-L (E3V7Y) Rabbit mAb (BSA and Azide Free)	ELISA	H, M, R
20149SF Neurogranin (E9V5C) Rabbit mAb (BSA and Azide Free)	ELISA	H, M, R
87231S Stathmin-2 Matched Antibody Pair	ELISA	M, R
16688SF α -Synuclein (A3U8B) XP [®] Rabbit mAb (BSA and Azide Free)	ELISA	M, R
26791T α -Synuclein ER Stress Antibody Sampler Kit	–	–
32905SF TREM2 (E9N1K) Rabbit mAb (BSA and Azide Free)	WB, ELISA	M
PI3K / Akt Signaling		
26436SF Akt1 (2H10) Mouse mAb (BSA and Azide Free)	ELISA	H, M, R, Mk
98449SF Phospho-Akt (Thr308) (L54B1) Mouse mAb (BSA and Azide Free)	WB, ELISA	H, M
25776S TCL1 (F9R1X) Rabbit mAb	WB, IHC-P, FC-FP	H
25776T		
RTK		
81226S ALK (D5F3 [™]) XP [®] Rabbit mAb (Alexa Fluor [®] 647 Conjugate)	IHC-P, FC-FP	H
71569SF CrkL (D4G7G) Rabbit mAb (BSA and Azide Free)	WB, ELISA	H
92869SF CSF-1R/M-CSF-R (D4E1P) Rabbit mAb (BSA and Azide Free)	ELISA	H
56254S Phospho-CSF-1R/M-CSF-R (Tyr699) Matched Antibody Pair	ELISA	H
91801SF Phospho-EGFR (Tyr1068) (M107E12) Mouse mAb (BSA and Azide Free)	ELISA	H
47371SF FLT3 (E5P4X) Mouse mAb (BSA and Azide Free)	ELISA	H
10018SF HER4/ErbB4 (D7H9) Rabbit mAb (BSA and Azide Free)	ELISA	H
72663SF HER4/ErbB4 (11B2) Rabbit mAb (BSA and Azide Free)	WB, ELISA	H, M, (R)
19186SF HER4/ErbB4 (A8S4E) Mouse mAb (BSA and Azide Free)	ELISA	H
62379SF c-Kit (Ab81) Mouse mAb (BSA and Azide Free)	WB, ELISA, IF-IC, FC-FP	H
31418SF Phospho-c-Kit (Tyr703) (D12E12) Rabbit mAb (BSA and Azide Free)	WB, ELISA	H
20912SF Mer (348E6) Mouse mAb (BSA and Azide Free)	WB, ELISA	H
36532S Phospho-Mer (panTyr) Matched Antibody Pair	ELISA	H
23910S Total Met Matched Antibody Pair	ELISA	H
84314S Phospho-Ret (panTyr) Matched Antibody Pair	ELISA	H
42710SF Ron (C81H9) Rabbit mAb (BSA and Azide Free)	WB, ELISA	H
51735S Phospho-Tyro3 (panTyr) Matched Antibody Pair	ELISA	H
Translational Control		
27899SF Phospho-4E-BP1 (Ser65) (D9G1Q) Rabbit mAb (BSA and Azide Free)	WB, ELISA	H, Mk
93416S PAPP7 (F1Q9R) Rabbit mAb	WB, IP	H, Mk
93416T		
37095S PRPF4 (F9Z1U) Rabbit mAb	WB	H, M, R, Mk
37095T		
69882S RBM25 (F9X4K) Rabbit mAb	WB, IP	H, M, R, Mk
69882T		
Ubiquitin and Ubiquitin-Like Proteins		
30270S SART3 (F8W1S) Rabbit mAb	WB, IP	H, M, R, Mk
30270T		
Related Products		
82717S Goat Anti-Mouse IgG (H+L) Antibody (Alexa Fluor [®] 350 Conjugate)	FC-FP, FC-L	M
97627S Goat Anti-Mouse IgG (H+L) Antibody (Alexa Fluor [®] 532 Conjugate)	FC-FP, FC-L	M
43244S Goat Anti-Mouse IgG (H+L) Antibody (Alexa Fluor [®] 700 Conjugate)	FC-FP, FC-L	M
48609S Goat Anti-Rabbit IgG (H+L) Antibody (Alexa Fluor [®] 350 Conjugate)	FC-FP, FC-L	Rab
74346S Goat Anti-Rabbit IgG (H+L) Antibody (Alexa Fluor [®] 532 Conjugate)	FC-FP, FC-L	Rab
41445S Goat Anti-Rabbit IgG (H+L) Antibody (Alexa Fluor [®] 700 Conjugate)	FC-FP, FC-L	Rab

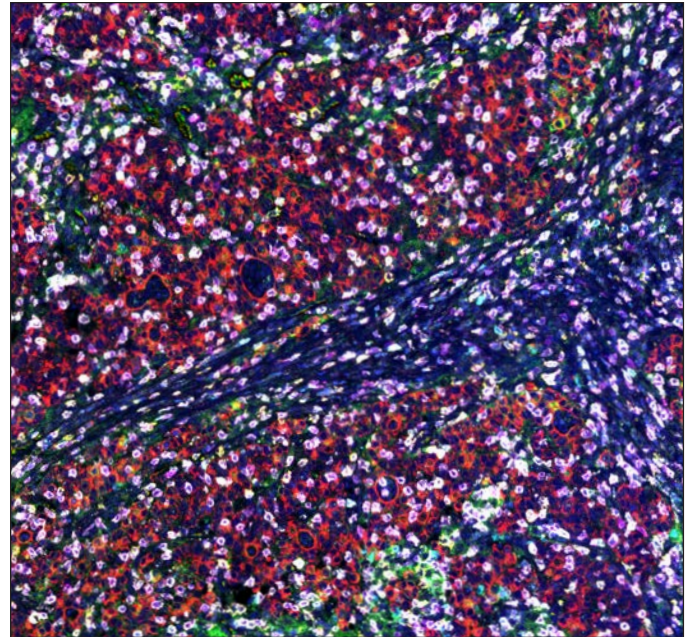
What's New at CST



Here are 4000+ new ways to try CST-quality antibodies.

We now have even more of the world's most cited primary antibodies available in budget-friendly trial size. They're ideal for early-stage target exploration, proof-of-concept studies, and small-volume assays—and guaranteed to work as expected in your assay. Every time.

cst-science.com/Q4-2024-info1



The World's Top-Cited Antibodies

Twelve companies have products on CiteAb's latest list of Top Cited Antibodies. CST® antibodies account for over 1/3 of the entire list.

cst-science.com/Q4-2024-info2

For Research Use Only. Not for Use in Diagnostic Procedures.

© 2024 Cell Signaling Technology, Inc. CST, Cell Signaling Technology, and XP are registered trademarks of Cell Signaling Technology, Inc. All other trademarks are the property of their respective owners. Visit cellsignal.com/trademarks for more information. 24-PRG-57500-EN

cellsignal.com/newproducts



Cell Signaling
TECHNOLOGY®