



New Products

JUNE 2023

EuroClone®

We are continually expanding our portfolio to meet your research needs. *Check out* the new products released this month!

HOT PRODUCTS

CAR-T Cell (G4S Linker Linker) Transduction Efficiency Flow Cytometry Panel #18839

CAR-T Cell (Whitlow/218 Linker) Transduction Efficiency Flow Cytometry Panel #35139

Detect G4S or Whitlow/218 linker-transfected CAR-expressing cells

G4S linker is a type of flexible, unstructured synthetic peptide linker sequence often leveraged to connect the variable heavy (VH) domain and variable light (VL) domain of single-chain variable fragments (scFvs) and chimeric antigen receptors (CARs) that utilize an extracellular domain scFv for target antigen recognition. Similarly, the Whitlow/218 peptide is a commonly used linker that connects the VH domain and VL domain of scFvs and CARs that utilize an extracellular domain scFv for target antigen recognition.

#18839 and #35139 can be used to identify conventional human T cell subsets that have been engineered to express scFv-based CARs containing a G4S or Whitlow/218 linker.

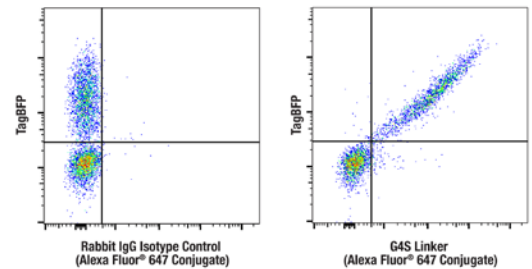
KEYWORDS: CAR-T therapy, Cancer Immunology

Pan-Keratin (Type I) (E6S1S) Rabbit mAb #83957

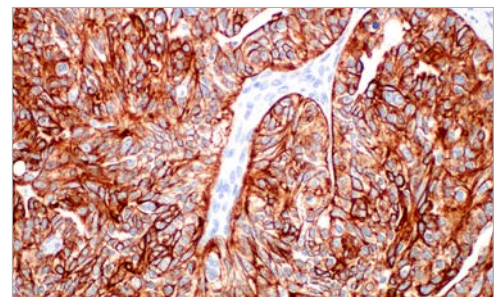
Important protein in the cytoskeleton

Keratins (cytokeratins) are intermediate filament proteins that are mainly expressed in epithelial cells. Keratin heterodimers composed of an acidic keratin (or type I keratin, keratins 9 to 23) and a basic keratin (or type II keratin, keratins 1 to 8) assemble to form filaments. Keratin isoforms demonstrate tissue- and differentiation-specific profiles that make them useful as research biomarkers. Research studies have shown that mutations in keratin genes are associated with skin disorders, liver and pancreatic diseases, and inflammatory intestinal diseases.

KEYWORDS: Cytoskeleton

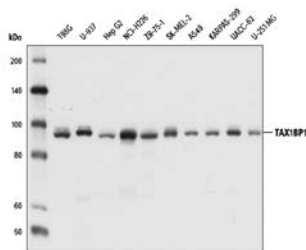


FC-L: Flow cytometric analysis of live pan-CD3+ T cells isolated from human PBMCs and engineered to express an scFv-based Anti-CD20 CAR containing a G4S linker, using G4S Linker (E702V) Rabbit mAb (Alexa Fluor® 647 Conjugate) (right) or concentration-matched Rabbit (DA1E) mAb IgG XP® Isotype Control (Alexa Fluor® 647 Conjugate) #2985 (left). Tag Blue fluorescent protein (TagBFP) is co-expressed with the CAR. Data courtesy of Michael Kvorjak, Lohmueller lab (University of Pittsburgh).

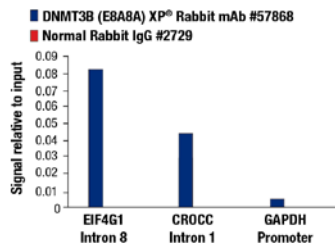


IHC-P: IHC analysis of paraffin-embedded human serous papillary carcinoma of the ovary using Pan-Keratin (Type I) (E6S1S) Rabbit mAb.





Xenophagy Antibody Sampler Kit #56175

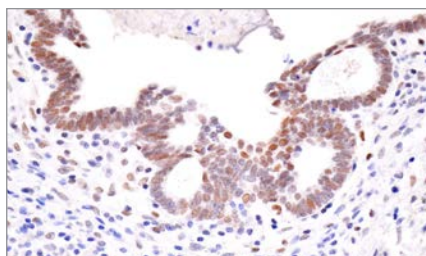


DNA Methylation Antibody Sampler Kit #88548

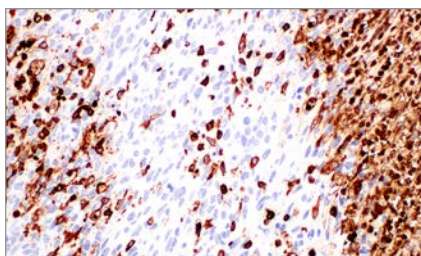


Mouse Reactive DNA Demethylation Antibody Sampler Kit #19206

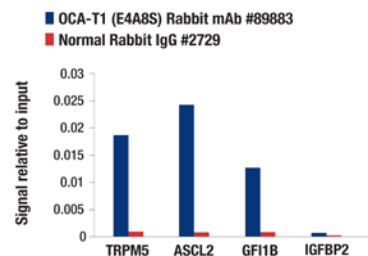
PRODUCT	APPLICATIONS	REACTIVITY
Adhesion/ECM		
80085SF COL5A1 (E6U9W) Rabbit mAb (BSA and Azide Free)	WB, IHC-LB, IHC-P, IF-IC	H
69587SF Integrin β 1 (D6S1W) Rabbit mAb (BSA and Azide Free)	WB, IHC-P	H, M, R
60100SF MUC5AC (E3O9I) XP [®] Rabbit mAb (BSA and Azide Free)	IHC-LB, IHC-P, IF-IC	H
63205SF PAI-1 (E3I5H) XP [®] Rabbit mAb (BSA and Azide Free)	WB, IHC-P, IF-IC	H
Apoptosis		
74731S Puma (E2P7G) Rabbit mAb (Biotinylated)	WB	H, M
16848SF VDAC (D73D12) Rabbit mAb (BSA and Azide Free)	WB, IHC-P	H, M, R, Mk
37329SF XIAP (D2Z8W) Rabbit mAb (BSA and Azide Free)	WB, IHC-P	H, Mk
Autophagy		
56175T Xenophagy Antibody Sampler Kit	–	–
Ca, cAMP and Lipid Signaling		
10607SF PLC γ 1 (D9H10) XP [®] Rabbit mAb (BSA and Azide Free)	WB, IHC-P	H, M, R, Mk
Cell Cycle / Checkpoint Control		
76784SF Phospho-Chk1 (Ser345) (I33D3) Rabbit mAb (BSA and Azide Free)	WB, IF-IC, FC-FP	H, M, R, Mk
63862S EXO1 (E6P2B) Rabbit mAb	WB	H, M
31426SF p14 ARF (E3X6D) Rabbit mAb (BSA and Azide Free)	WB, IHC-LB, IHC-P, IF-IC, FC-FP	H
49248SF p63- α (D2K8X) XP [®] Rabbit mAb (BSA and Azide Free)	WB, IF-IC, FC-FP	H
61244S RIF1 Antibody	WB, IP	M
64005SF RPA32/RPA2 (E8X5P) XP [®] Rabbit mAb (BSA and Azide Free)	WB, IHC-P, IF-IC, FC-FP	H
Chromatin Regulation / Nuclear Function		
33725S Asymmetric Di-Methyl Histone H3 (Arg2) (E7W7S) Rabbit mAb	WB	H, M, R, Mk
48585T Non-Canonical BAF Complex Antibody Sampler Kit	–	–
88548T DNA Methylation Antibody Sampler Kit	–	–
19206T Mouse Reactive DNA Demethylation Antibody Sampler Kit	–	–
54513T PRMT Antibody Sampler Kit	–	–
50156S RPRD1B (E8J9U) Rabbit mAb	WB, IP	H, M, R, Mk
Cytoskeletal Signaling		
33136S GOLGA4/GOLGIN-245 (E2V6G) Rabbit mAb	WB	H, M
13597SF Keratin 19 (D7F7W) Rabbit mAb (BSA and Azide Free)	WB, IHC-P	H
83957S Pan-Keratin (Type I) (E6S1S) Rabbit mAb	WB, IHC-P	H, M, R
68775S POM121 (E3W3J) Rabbit mAb	WB, IHC-P	H, M, Mk
77181S SHP-1 (E1U6R) Rabbit mAb (Alexa Fluor [®] 488 Conjugate)	IF-F, IF-IC, FC-FP	H, M, R
81253SF β -Tubulin (9F3) Rabbit mAb (BSA and Azide Free)	WB, IHC-P, IF-IC, FC-FP	H, M, R, Mk, Z, B, (C)
Developmental Biology		
86533SF AGR2 (D9V2F) XP [®] Rabbit mAb (BSA and Azide Free)	WB, IHC-P, IF-IC, FC-FP	H, (Mk, X)
87697SF HIF-1 α (E1V6A) Rabbit mAb (BSA and Azide Free)	WB, IHC-LB, IHC-P, IF-IC	H, M
24642T GATA Transcription Factor Antibody Sampler Kit	–	–
89883S OCA-T1 (E4A8S) Rabbit mAb	WB, IP, ChIP	H
49316S OCA-T1 (E4T1K) Rabbit mAb	WB, IP, IHC-P	H



HIF-1α (E1W6A) Rabbit mAb (BSA and Azide Free) #87697

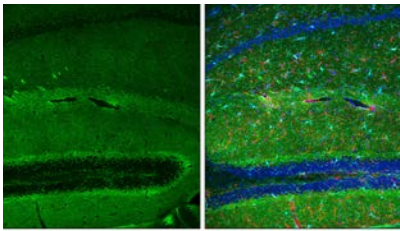


CD11b/ITGAM (E4K8C) Rabbit mAb #93169

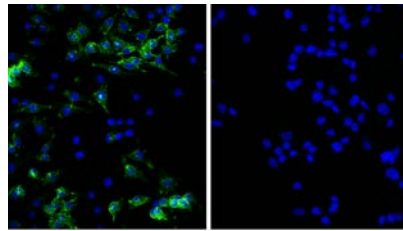


OCA-T1 (E4A8S) Rabbit mAb #89883

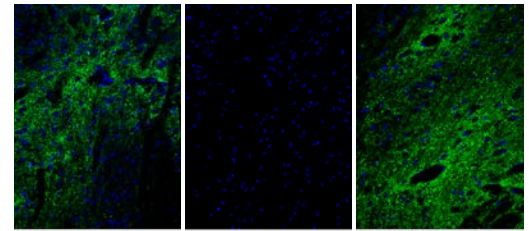
PRODUCT	APPLICATIONS	REACTIVITY
Developmental Biology (cont.)		
48505S PAX5 (D7H5X) XP [®] Rabbit mAb (Alexa Fluor [®] 647 Conjugate)	IF-IC, FC-FP	H, M
78245S TCF12/HEB (E5R8X) Rabbit mAb	WB, IP, IHC-P	H
95359S TCF12/HEB (E8R5E) Rabbit mAb	WB, IP, IF-IC, FC-FP	H
Immunology and Inflammation		
18839S CAR-T Cell (G4S Linker) Transduction Efficiency Flow Cytometry Panel	FC-L	H
35139S CAR-T Cell (Whitlow/218 Linker) Transduction Efficiency Flow Cytometry Panel	FC-L	H
76924S CCL20 (E6J9K) Rabbit mAb	WB	H
93169S CD11b/ITGAM (E4K8C) Rabbit mAb	WB, IHC-P	M
15968S Phospho-CD79A (Tyr210) (E8E9Z) Rabbit mAb (Alexa Fluor [®] 488 Conjugate)	FC-FP	H
33033S Phospho-CD79A (Tyr210) (E8E9Z) Rabbit mAb (Alexa Fluor [®] 647 Conjugate)	FC-FP	H
27569S Phospho-CD79A (Tyr210) (E8E9Z) Rabbit mAb (PE Conjugate)	FC-FP	H
55011S CD93/C1qR (E5H9B) Rabbit mAb	WB, IP, IHC-P, FC-L	H
89527SF Tissue Factor/CD142 (E9M6T) XP [®] Rabbit mAb (BSA and Azide Free)	WB, IHC-LB, IHC-P	H
36508S CD206/MRC1 (E6T5J) XP [®] Rabbit mAb (Alexa Fluor [®] 488 Conjugate)	IHC-P	H, M, R
71103SF EOMES (D8D1R) Rabbit mAb (BSA and Azide Free)	WB, IF-IC, FC-FP	H
81563SF FcγRIIB (D8F9C) XP [®] Rabbit mAb (BSA and Azide Free)	WB, IHC-LB, IHC-P, FC-FP	M
63107SF GM-CSF Receptor α (E8Z3S) Rabbit mAb (BSA and Azide Free)	WB, IHC-LB, IHC-P	H
98946S Granzyme K (E6Z6O) Rabbit mAb	WB, IF-IC	H
46336SF Ly6k (E4K8Y) XP [®] Rabbit mAb (BSA and Azide Free)	WB, IHC-LB, IHC-P	M
99419SF OX40 (ACT35) Mouse mAb (BSA and Azide Free)	WB, IHC-LB, IHC-P, IF-IC, FC-FP, FC-L	H
65062S PTPRCAP (E8E6G) Rabbit mAb	WB, IP	H
84878SF S100A7 (E7X2C) Rabbit mAb (BSA and Azide Free)	WB, IHC-LB, IHC-P	H
30495S Phospho-STING (Ser366) (E9A9K) Rabbit mAb (Biotinylated)	WB	H
39887S Phospho-STING (Ser366) (D7C3S) Rabbit mAb (Biotinylated)	WB	H
79181S Tax2 (E3N3G) Rabbit mAb	WB, IP, FC-FP	H
87061S Tax4 (E9U3L) Rabbit mAb	WB, IP	H, M, R
MAP Kinase Signaling		
51520SF Fra2 (D2F1E) Rabbit mAb (BSA and Azide Free)	WB, IHC-P	H, (B, Hr)
97721SF Phospho-c-Jun (Ser63) (54B3) Rabbit mAb (BSA and Azide Free)	WB, IHC-P	H, M, R
89967SF Phospho-p44/42 MAPK (Erk1) (Tyr204)/(Erk2) (Tyr187) (D1H6G) Mouse mAb (BSA and Azide Free)	WB, IF-IC, FC-FP	H, M, R, Mk, (C, Dm, X, Z, B, Ce)
93317SF Phospho-p90RSK (Ser380) (D3H11) Rabbit mAb (BSA and Azide Free)	WB, IHC-P, IF-IC	H, M, R, Mk, Mi, (C, X, Z, B, Dg, Pg, Hr)
50832S Shc (E6I4B) Rabbit mAb	WB, IP	H, M, R
94740SF Phospho-SHP-2 (Tyr542) (E8D6V) Rabbit mAb (BSA and Azide Free)	WB, FC-FP	H, M, R
Metabolism		
55876S AGK (E1C6X) Rabbit mAb	WB, IP	H, M, R
68036S PGM1 (E2I5G) Rabbit mAb	WB	H, M, R
30204SF SOD2 (D3X8F) XP [®] Rabbit mAb (BSA and Azide Free)	WB, IHC-P	H, M, R, Mk
81744S TFE3 (E6T9M) Rabbit mAb	WB, IP	H, M



GAP43 (E6L2W) Mouse mAb #41653

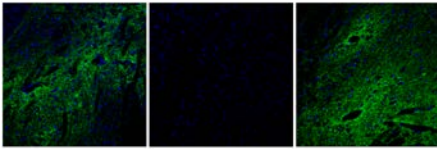


PILRA (E6H7K) Rabbit mAb #79482

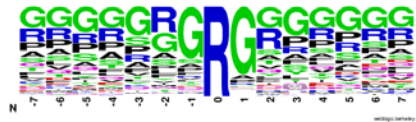


Phospho-Synapsin-1 (Ser9) (E3D2X) Rabbit mAb #67605

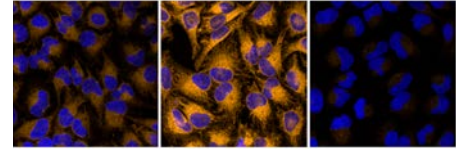
PRODUCT	APPLICATIONS	REACTIVITY
Metabolism (cont.)		
65619S TOM70 (E7E1M) Rabbit mAb	WB, IF-F, IF-IC	H, M, R
42477S UQCRCFS1/RISP (E6Q7L) Rabbit mAb	WB, IP	H, M, R
Motif Antibodies		
87654S PTMScan® HS Pilot Mono-Methyl Arginine Motif (mme-RG) Kit	–	–
71147S PTMScan® HS Pilot Asymmetric Di-Methyl Arginine Motif (adme-R) Kit	–	–
36445S PTMScan® HS Pilot Symmetric Di-Methyl Arginine Motif (sdme-RG) Kit	–	–
Neuroscience		
40619S Doublecortin (E3S7L) Rabbit mAb	WB, IHC-P	H, M, R
54070SF EGR1 (44D5) Rabbit mAb (BSA and Azide Free)	WB, IF-IC, FC-FP	H, M, R, (B)
30817S GAP43 (E1U1D) Mouse mAb	WB, IF-F, IF-IC	H, M, R
41653S GAP43 (E6L2W) Mouse mAb	WB, IF-F, IF-IC	H, M, R
96166S GDNF (E5Y9N) Rabbit mAb	WB, IP	H, M
45946SF GFAP (E4L7M) XP® Rabbit mAb (BSA and Azide Free)	WB, IHC-LB, IHC-P, IF-F	H, M, R, Mk
20218S GluD2/GRID2 (E419V) Rabbit mAb	WB	H, M, R
26423SF Iba1/AIF-1 (E5N4J) Mouse mAb (BSA and Azide Free)	IHC-LB, IHC-P	H, Mk
73262SF Nestin (E4O9E) XP® Rabbit mAb (BSA and Azide Free)	WB, IHC-P, IF-IC	H
79482S PILRA (E6H7K) Rabbit mAb	WB, IF-F, IF-IC, FC-FP, FC-L	M
30683SF S100B (E9F2I) Rabbit mAb (BSA and Azide Free)	WB, IHC-P	H, M, R
67605S Phospho-Synapsin-1 (Ser9) (E3D2X) Rabbit mAb	WB, IP, IF-F	H, M, R
99220S Phospho-Tau (Ser413) (E4Y6M) Rabbit mAb	WB, IP	H, M, R
32644S TRIM9 (E5P3R) Rabbit mAb	WB, IP	H, M, R
74597SF β3-Tubulin (D71G9) XP® Rabbit mAb (BSA and Azide Free)	WB, IF-F, IF-IC	H, M, R
Nuclear Receptor Signaling		
89954S Estrogen Receptor β (E2K7F) Rabbit mAb	WB	H
Protein Folding and Trafficking		
55528S ACE2 (E1E1I) Mouse mAb (Alexa Fluor® 488 Conjugate)	FC-L	H, M
57551S FKBP10 (E8M4E) Rabbit mAb	WB	H
RTK		
53177SF EGF Receptor (E746-A750del Specific) (D6B6) XP® Rabbit mAb (BSA and Azide Free)	WB, IHC-P, IF-P, IF-IC, FC-FP	H
83546SF FGF Receptor 2 (D4L2V) Rabbit mAb (BSA and Azide Free)	WB, IHC-P, IF-IC, FC-FP, FC-L	H, M
73367SF Phospho-HER3/ErbB3 (Tyr1289) (21D3) Rabbit mAb (BSA and Azide Free)	WB, IHC-P	H, M, (R, Dg)
48392SF PDGF Receptor β (C82A3) Rabbit mAb (BSA and Azide Free)	WB, IHC-P	H, M, R
Translational Control		
29483T Argonaute Antibody Sampler Kit	–	–
84348S DIS3 (E511Y) Rabbit mAb	WB, IP	H, Mk
51406SF TFEB (D2O7D) Rabbit mAb (BSA and Azide Free)	WB, IHC-P	H
Ubiquitin and Ubiquitin-like proteins		
89771S ISG15 (E5B3U) Rabbit mAb	WB	M



Phospho-Synapsin-1 (Ser9) (E3D2X) Rabbit mAb #99220



PTMScan[®] HS Pilot Symmetric Di-Methyl Arginine Motif (sdme-RG) Kit #36445



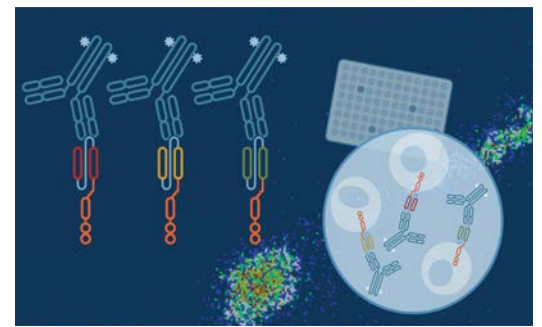
FerroOrange #36104

PRODUCT	APPLICATIONS	REACTIVITY
Ubiquitin and Ubiquitin-like proteins (cont.)		
60396SF Ubiquitin (E6K4Y) XP [®] Rabbit mAb (BSA and Azide Free)	WB, IHC-P	All
23982S Ubiquitin (P4D1) Mouse mAb (Biotinylated)	WB	All
Related Products		
36104S FerroOrange	IF-IC, FC-L	—

First-to-Market CAR Detection Reagents for CAR-T Research: Anti-CAR Linker mAbs

CST[®] anti-CAR linker antibodies won The Innovation Award from CiteAb in 2023.

First-to-market anti-CAR linker antibodies can be a versatile detection reagent that could identify and confirm the presence of your CAR, regardless of its antigen specificity. The antibodies are available in a variety of conjugates and can also be custom-conjugated using our custom conjugation services. View below for a full list of products.



PRODUCT	APPLICATIONS	REACTIVITY
Immunology and Inflammation		
71645S G4S Linker (E7O2V) Rabbit mAb	FC-L	All
63670S G4S Linker (E7O2V) Rabbit mAb (BSA and Azide Free)	FC-L	All
50515S G4S Linker (E7O2V) Rabbit mAb (Alexa Fluor [®] 488 Conjugate)	FC-L	All
90841S G4S Linker (E7O2V) Rabbit mAb (Alexa Fluor [®] 532 Conjugate)	FC-L	All
18862S G4S Linker (E7O2V) Rabbit mAb (Alexa Fluor [®] 555 Conjugate)	FC-L	All
39614S G4S Linker (E7O2V) Rabbit mAb (Alexa Fluor [®] 594 Conjugate)	FC-L	All
69782S G4S Linker (E7O2V) Rabbit mAb (Alexa Fluor [®] 647 Conjugate)	FC-L	All
40107S G4S Linker (E7O2V) Rabbit mAb (Alexa Fluor [®] 700 Conjugate)	FC-L	All
17621S G4S Linker (E7O2V) Rabbit mAb (Biotinylated)	FC-L	All
38907S G4S Linker (E7O2V) Rabbit mAb (PE Conjugate)	FC-L	All
57710S Whitlow/218 Linker (E3U7Q) Rabbit mAb	FC-L	All
66159S Whitlow/218 Linker (E3U7Q) Rabbit mAb (BSA and Azide Free)	FC-L	All
55809S Whitlow/218 Linker (E3U7Q) Rabbit mAb (Alexa Fluor [®] 488 Conjugate)	FC-L	All
25186S Whitlow/218 Linker (E3U7Q) Rabbit mAb (Alexa Fluor [®] 532 Conjugate)	FC-L	All
85651S Whitlow/218 Linker (E3U7Q) Rabbit mAb (Alexa Fluor [®] 555 Conjugate)	FC-L	All
61465S Whitlow/218 Linker (E3U7Q) Rabbit mAb (Alexa Fluor [®] 594 Conjugate)	FC-L	All
69310S Whitlow/218 Linker (E3U7Q) Rabbit mAb (Alexa Fluor [®] 647 Conjugate)	FC-L	All
72160S Whitlow/218 Linker (E3U7Q) Rabbit mAb (Alexa Fluor [®] 700 Conjugate)	FC-L	All
32523S Whitlow/218 Linker (E3U7Q) Rabbit mAb (Biotinylated)	FC-L	All
62405S Whitlow/218 Linker (E3U7Q) Rabbit mAb (PE Conjugate)	FC-L	All



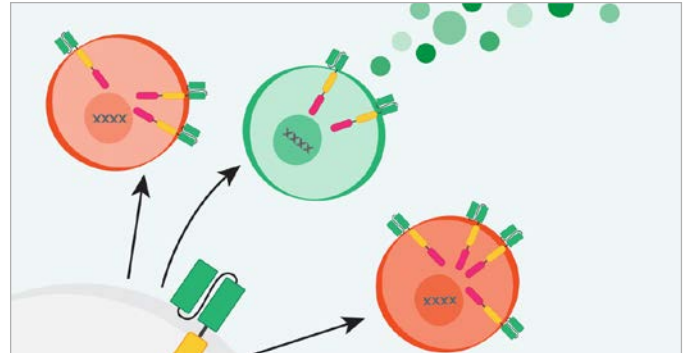
What's New at CST



CST® Antibodies Validated for Simple Western

CST optimized. Simply dilute the antibody to the recommended dilution, then run your standard Simple Western protocol. From traditional, to fluorescent, to in-cell, and now automated; CST is your go-to Western blotting antibody supplier.

cst-science.com/Q2-2023-info1



CAR-T Resources

Enable your preclinical research with this curated selection of immunotherapy products, including cytotoxicity assays. See the resources.

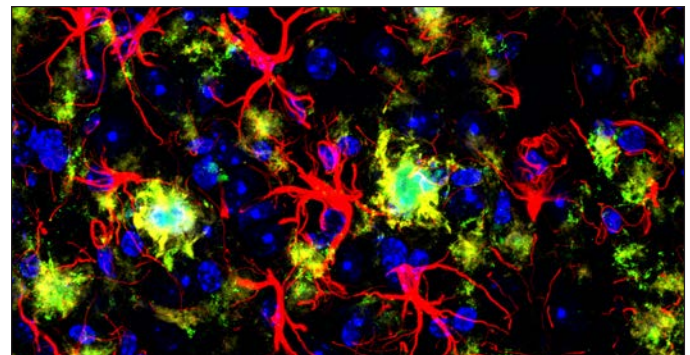
cst-science.com/Q2-2023-info2



CUT&RUN Protocol Video

Watch the new, step-by-step CUT&RUN protocol video for everything you need to build your confidence and start mapping protein-DNA interactions in your samples. This video includes expert advice on experimental design and tips for success..

cst-science.com/Q2-2023-info3



“Solutions for Neurodegeneration Drug Discovery”

Download Solutions for Advancing Neurodegeneration Therapeutics Discovery to learn how our broad antibody portfolio, key readouts, ready-to-use ELISAs, and cellular kits can help you develop new, more efficacious therapies.

cst-science.com/Q2-2023-info4

For Research Use Only. Not for Use in Diagnostic Procedures.

© 2023 Cell Signaling Technology, Inc. CST, Cell Signaling Technology, and XP are registered trademarks of Cell Signaling Technology, Inc. All other trademarks are the property of their respective owners. Visit cellsignal.com/trademarks for more information. 23-PRG-83216-EN

cellsignal.com/newproducts

 **Cell Signaling**
TECHNOLOGY®