



New Products

JULY 2023

EuroClone®

We are continually expanding our portfolio to meet your research needs. *Check out* the new products released this month!

HOT PRODUCTS

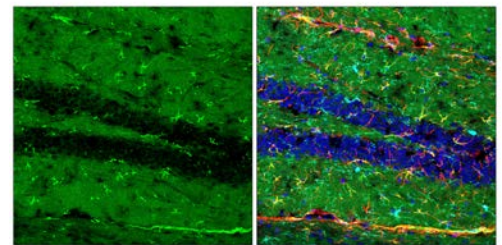
Clusterin (E2O1D) Rabbit mAb #23159

Molecular chaperone

Clusterin functions as a secreted chaperone protein that interacts with and stabilizes stress-induced proteins to prevent their precipitation. Research studies show that clusterin plays a protective role in Alzheimer's disease by sequestering amyloid β (1-40) peptides to form long-lived, stable complexes, which prevents amyloid fibril formation.

In addition to the secreted protein, several intracellular isoforms are localized to the nucleus, mitochondria, cytoplasm, and ER. The subcellular distribution of these multiple isoforms leads to the diversity of clusterin functions. Additional studies report that clusterin is involved in membrane recycling, cell adhesion, cell proliferation, apoptosis, and tumor survival.

KEYWORDS: Molecular chaperones, Alzheimer's disease



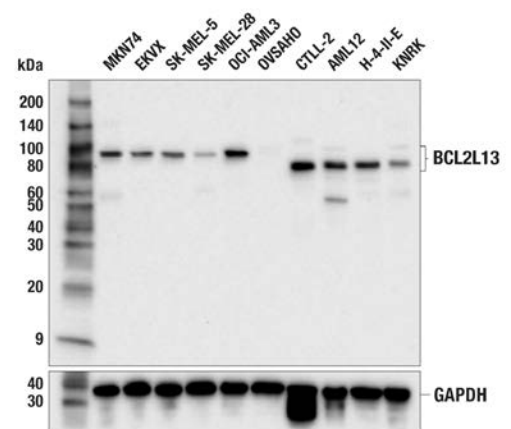
IF-F: Confocal IF analysis of fixed frozen mouse hippocampus labeled with #23159 (left, green). Free secondary binding sites were then blocked with Rabbit (DA1E) mAb IgG XP® Isotype Control #3900 prior to co-labeling with GFAP (GAS) Mouse mAb (Alexa Fluor® 647 Conjugate) #3657 (right, red), Iba1/AIF-1 (E404W) XP® Rabbit mAb (Alexa Fluor® 555 Conjugate) #36618 (right, cyan pseudocolor), and ProLong Gold Antifade Reagent with DAPI #8961 (right, blue).

BCL2L13 (E6G1Q) Rabbit mAb #61974

Regulates apoptosis and mitophagy

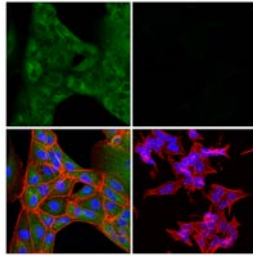
BCL2L13 (Bcl-2-like protein 13, Bcl-rambo) is an atypical member of the Bcl-2 family of proteins that regulate apoptosis at the mitochondria. BCL2L13 may regulate apoptosis in a cellular context manner. Interaction with the adenine nucleotide translocator (ANT) suppresses the ADP/ATP-dependent translocation activity of ANT. Other studies have found that BCL2L13 can inhibit apoptosis in glioblastoma and tumor growth. These studies found that BCL2L13 binds to pro-apoptotic CerS2 and CerS6 and blocks homo- and heteromeric CerS2/6 complex formation and activity. Studies have also found that BCL2L13 can regulate mitochondrial fragmentation and can bind to LC3 to facilitate the clearance of damaged mitochondria through mitophagy.

KEYWORDS: Apoptosis, Mitophagy, Cell death

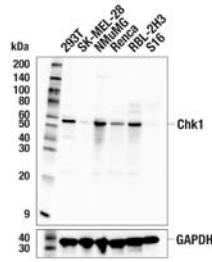


WB: WB analysis of extracts from various cell lines using #61974 (upper) or GAPDH (D16H11) XP® Rabbit mAb #5174 (lower). Negative expression of BCL2L13 protein in OVSARO cells is consistent with the predicted expression pattern.

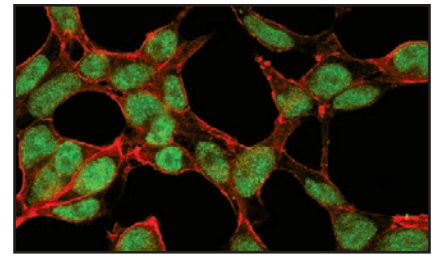




Apoptosis/Necroptosis Antibody Sampler Kit II #73966

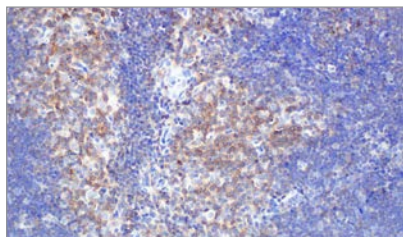


Chk1 (E9M4D) Rabbit mAb #37010

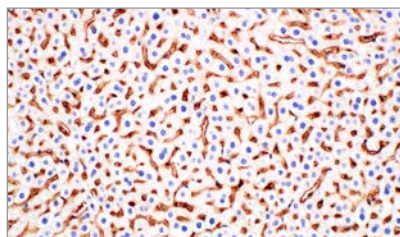


Mismatch DNA Repair (MMR) Antibody Sampler Kit #89884

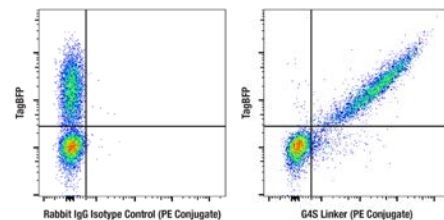
PRODUCT	APPLICATIONS	REACTIVITY
Adhesion/ECM		
61408S DPP4/CD26 (E2V5I) Rabbit mAb	WB	M, R
53884S LAMC2 (E9F7M) Rabbit mAb	WB	H
47449S MMP-9 (E3D1W) Rabbit mAb	WB	H
67950C PathScan® RP Total FAK Sandwich ELISA Kit	ELISA	H, M
86460S TUFT1 (E9M2U) Rabbit mAb	WB	H
Apoptosis		
73966T Apoptosis/Necroptosis Antibody Sampler Kit II	-	-
61974S BCL2L13 (E6G1Q) Rabbit mAb	WB, IP	H, M, R
16046S Cleaved Caspase-6 (Asp179) (E8L9T) Rabbit mAb	WB	H
26776T Gasdermin Family Antibody Sampler Kit	-	-
Ca, cAMP and Lipid Signaling		
87716SF Calretinin (E7R6O) XP® Rabbit mAb (BSA and Azide Free)	WB, IHC-P, IF-F, IF-IC	H, M, R
Cell Cycle / Checkpoint Control		
85785S Anillin (E9L6E) Rabbit mAb	WB	H
37010S Chk1 (E9M4D) Rabbit mAb	WB	H, M, R
58268SF DNA-PKcs (E6U3A) Rabbit mAb (BSA and Azide Free)	WB, IHC-P, IF-IC, FC-FP	H
63273S Ki-67 (D2H10) Rabbit mAb (Alexa Fluor® 488 Conjugate)	IHC-P	H
88338S Ki-67 (D2H10) Rabbit mAb (Alexa Fluor® 555 Conjugate)	IHC-P	H
89884T Mismatch DNA Repair (MMR) Antibody Sampler Kit	-	-
37698SF MSH2 (D24B5) XP® Rabbit mAb (BSA and Azide Free)	WB, IHC-P, IF-IC, FC-FP	H, M
86714S XRCC2 (E7M8Y) Rabbit mAb	WB, IP	H
Chromatin Regulation / Nuclear Function		
62935S BAF Antibody	WB	H, M, R, Mk
93589T BAF Complex IHC Antibody Sampler Kit	-	-
68280S DGCR8 (E9O3L) Rabbit mAb	WB, IP, ChIP	H, M, R, Mk
40653S PHF6 (E8F2L) Rabbit mAb	WB, IP, ChIP	H, M, R, Mk
37315S RBM9 (E7W6U) Rabbit mAb	WB, IP	H, Mk
27106C PathScan® RP BRD9 Sandwich ELISA Kit	ELISA	H
20055S SET1B (E7D1G) Rabbit mAb	WB, IP, ChIP	H
Cytoskeletal Signaling		
44873S Filamin A (E8P8M) Rabbit mAb	WB, IHC-P, IF-F	H, M, R, Mk
Developmental Biology		
33699SF HES1 (D6P2U) Rabbit mAb (BSA and Azide Free)	WB, IHC-P	H, M, R, Mk
32253SF NKX3.1 (D6D2Z) XP® Rabbit mAb (BSA and Azide Free)	WB, IHC-P	H
61048S TACE (E8R8M) Rabbit mAb	WB, IP	H, M, R
Immunology and Inflammation		
63178S CD3ε (D7A6E™) XP® Rabbit mAb (Alexa Fluor® 647 Conjugate)	IHC-P	H
47434S CD3ζ (E8R1Q) Rabbit mAb	WB, IP	H
37217S CD6 (E9Q1V) Rabbit mAb	WB, IHC-P	M
77909S CD8α (D8A8Y) Rabbit mAb (Alexa Fluor® 555 Conjugate)	IHC-P	H, Mk



CD6 (E9Q1V) Rabbit mAb #37217

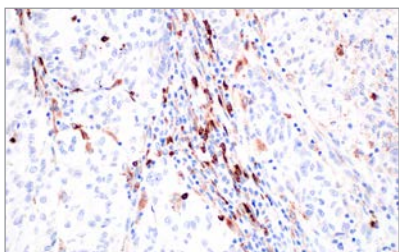


CD47 (E2V9V) Rabbit mAb #36096

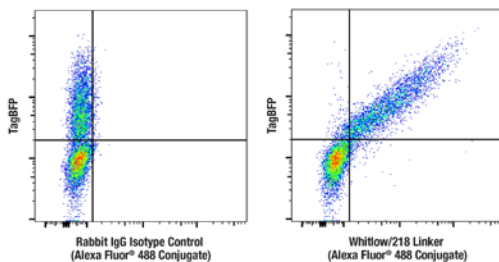


G4S Linker (E7O2V) Rabbit mAb (PE Conjugate) #38907

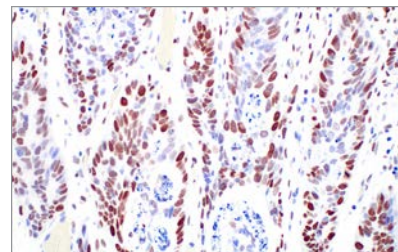
PRODUCT	APPLICATIONS	REACTIVITY
Immunology and Inflammation (cont.)		
48893S CD11b/ITGAM (E3J2F) Rabbit mAb	WB, IHC-P, IF-IC	H
37940S CD11b/ITGAM (D6X1N) Rabbit mAb (Alexa Fluor® 488 Conjugate)	IHC-P	H
19246S CD11b/ITGAM (D6X1N) Rabbit mAb (Alexa Fluor® 555 Conjugate)	IHC-P	H
79750S CD11b/ITGAM (D6X1N) Rabbit mAb (Alexa Fluor® 647 Conjugate)	IHC-P	H, Mk
95103S CD11c (D3V1E) XP® Rabbit mAb (Alexa Fluor® 488 Conjugate)	IHC-P	H
77882S CD11c (D3V1E) XP® Rabbit mAb (Alexa Fluor® 555 Conjugate)	IHC-P	H
42756S CD11c (D3V1E) XP® Rabbit mAb (Alexa Fluor® 647 Conjugate)	IHC-P	H
86076S CD45 (Intracellular Domain) (D9M8I) XP® Rabbit mAb (Alexa Fluor® 488 Conjugate)	IHC-P	H, Mk
19744S CD45 (D9M8I) XP® Rabbit mAb (Alexa Fluor® 647 Conjugate)	IHC-P	H
36096S CD47 (E2V9V) Rabbit mAb	WB, IHC-P	M
58225S CD62L/L-Selectin (E7X9I) Rabbit mAb	WB, IHC-P	H
76220S CD206/MRC1 (E6T5J) XP® Rabbit mAb (Alexa Fluor® 555 Conjugate)	IHC-P, IF-F	H, M, R
43920S CD206/MRC1 (E6T5J) XP® Rabbit mAb (Alexa Fluor® 647 Conjugate)	IHC-P, IF-F	H, M, R
98492SF Fcγ (E6Y1A) Rabbit mAb (BSA and Azide Free)	WB, IHC-LB, IHC-P, IF-F, IF-IC	H, M
33461SF FcRn (E9J8W) Rabbit mAb (BSA and Azide Free)	WB, IHC-LB, IHC-P	H
38915SF Fibrinogen gamma chain (EIU3Z) XP® Rabbit mAb (BSA and Azide Free)	WB, IHC-LB, IHC-P	H
71645L G4S Linker (E7O2V) Rabbit mAb	FC-L	All
71645T		
50515L G4S Linker (E7O2V) Rabbit mAb (Alexa Fluor® 488 Conjugate)	FC-L	All
69782L G4S Linker (E7O2V) Rabbit mAb (Alexa Fluor® 647 Conjugate)	FC-L	All
38907L G4S Linker (E7O2V) Rabbit mAb (PE Conjugate)	FC-L	All
88084SF Galectin-1/LGALS1 (8A12) Mouse mAb (BSA and Azide Free)	WB, IHC-P	H
40019SF GNLY (E2T3D) Rabbit mAb (BSA and Azide Free)	WB, IHC-P, IF-IC, FC-FP	H
29268S Granzyme B (D6E9W) Rabbit mAb (Alexa Fluor® 555 Conjugate)	IHC-P	H, M
71535S Granzyme B (D6E9W) Rabbit mAb (Alexa Fluor® 647 Conjugate)	IHC-P	H, M, Mk
16483L Ibrutinib	-	-
81361S IL-6Rα/CD126 (E5B3P) Rabbit mAb (Alexa Fluor® 488 Conjugate)	FC-L	H
98797S IL-6Rα/CD126 (E5B3P) Rabbit mAb (Alexa Fluor® 647 Conjugate)	FC-L	H
67459S Lysozyme C (E9W6E) Rabbit mAb	WB, IHC-P	H
44238S MHC Class I (EMR8-5) Mouse mAb (Alexa Fluor® 488 Conjugate)	FC-FP	H
57549S MHC Class I (EMR8-5) Mouse mAb (Alexa Fluor® 555 Conjugate)	FC-FP	H
69717S MHC Class I (EMR8-5) Mouse mAb (Alexa Fluor® 647 Conjugate)	FC-FP	H
36845S OASL (E7W1R) Rabbit mAb	WB	H
76700S SAMHD1 (E8V1G) Rabbit mAb	WB, IP, FC-FP	H
20407S SerpinB1 (E4W7B) Rabbit mAb	WB, IHC-P	H
24201S SIT Antibody	WB	H
40284SF Phospho-Stat5 (Tyr694) (C7IE5) Rabbit mAb (BSA and Azide Free)	WB, IHC-P, IF-IC, FC-FP	H, M, (R, B)
42383S TAPBPR (E5P1F) Rabbit mAb	WB	H
84382S TMPRSS4 (E5F4W) Rabbit mAb	WB	H
51468S TRAT1 (E3L8A) Rabbit mAb	WB, IP	H



Lysozyme C (E9W6E) Rabbit mAb #67459

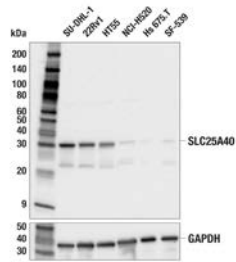


Whitlow/218 Linker (E3U7Q) Rabbit mAb (Alexa Fluor® 488 Conjugate) #55809

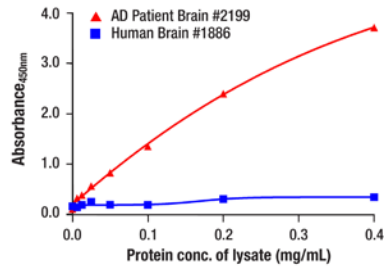


c-Fos (E217R) XP® Rabbit mAb (BSA and Azide Free) #61396

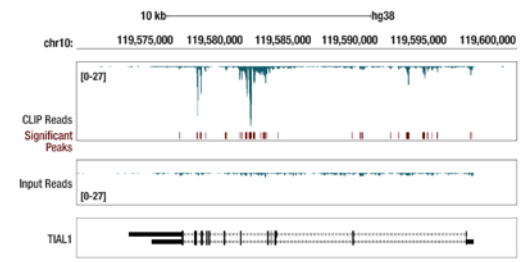
PRODUCT	APPLICATIONS	REACTIVITY
Metabolism (cont.)		
65619S TOM70 (E7E1M) Rabbit mAb	WB, IF-F, IF-IC	H, M, R
42477S UQCRCF1/RISP (E6Q7L) Rabbit mAb	WB, IP	H, M, R
Motif Antibodies		
87654S PTMScan® HS Pilot Mono-Methyl Arginine Motif (mme-RG) Kit	–	–
71147S PTMScan® HS Pilot Asymmetric Di-Methyl Arginine Motif (adme-R) Kit	–	–
36445S PTMScan® HS Pilot Symmetric Di-Methyl Arginine Motif (sdme-RG) Kit	–	–
Neuroscience		
40619S Doublecortin (E3S7L) Rabbit mAb	WB, IHC-P	H, M, R
54070SF EGR1 (44D5) Rabbit mAb (BSA and Azide Free)	WB, IF-IC, FC-FP	H, M, R, (B)
30817S GAP43 (E1U1D) Mouse mAb	WB, IF-F, IF-IC	H, M, R
41653S GAP43 (E6L2W) Mouse mAb	WB, IF-F, IF-IC	H, M, R
96166S GDNF (E5Y9N) Rabbit mAb	WB, IP	H, M
45946SF GFAP (E4L7M) XP® Rabbit mAb (BSA and Azide Free)	WB, IHC-LB, IHC-P, IF-F	H, M, R, Mk
20218S GluD2/GRID2 (E419V) Rabbit mAb	WB	H, M, R
26423SF Iba1/AIF-1 (E5N4J) Mouse mAb (BSA and Azide Free)	IHC-LB, IHC-P	H, Mk
73262SF Nestin (E4O9E) XP® Rabbit mAb (BSA and Azide Free)	WB, IHC-P, IF-IC	H
79482S PILRA (E6H7K) Rabbit mAb	WB, IF-F, IF-IC, FC-FP, FC-L	M
30683SF S100B (E9F2I) Rabbit mAb (BSA and Azide Free)	WB, IHC-P	H, M, R
67605S Phospho-Synapsin-1 (Ser9) (E3D2X) Rabbit mAb	WB, IP, IF-F	H, M, R
99220S Phospho-Tau (Ser413) (E4Y6M) Rabbit mAb	WB, IP	H, M, R
32644S TRIM9 (E5P3R) Rabbit mAb	WB, IP	H, M, R
74597SF β 3-Tubulin (D71G9) XP® Rabbit mAb (BSA and Azide Free)	WB, IF-F, IF-IC	H, M, R
Nuclear Receptor Signaling		
89954S Estrogen Receptor β (E2K7F) Rabbit mAb	WB	H
Protein Folding and Trafficking		
55528S ACE2 (E1E1I) Mouse mAb (Alexa Fluor® 488 Conjugate)	FC-L	H, M
57551S FKBP10 (E8M4E) Rabbit mAb	WB	H
RTK		
53177SF EGF Receptor (E746-A750del Specific) (D6B6) XP® Rabbit mAb (BSA and Azide Free)	WB, IHC-P, IF-P, IF-IC, FC-FP	H
83546SF FGF Receptor 2 (D4L2V) Rabbit mAb (BSA and Azide Free)	WB, IHC-P, IF-IC, FC-FP, FC-L	H, M
73367SF Phospho-HER3/ErbB3 (Tyr1289) (21D3) Rabbit mAb (BSA and Azide Free)	WB, IHC-P	H, M, (R, Dg)
48392SF PDGF Receptor β (C82A3) Rabbit mAb (BSA and Azide Free)	WB, IHC-P	H, M, R
Translational Control		
29483T Argonaute Antibody Sampler Kit	–	–
84348S DIS3 (E511Y) Rabbit mAb	WB, IP	H, Mk
51406SF TFEB (D2O7D) Rabbit mAb (BSA and Azide Free)	WB, IHC-P	H
Ubiquitin and Ubiquitin-like proteins		
89771S ISG15 (E5B3U) Rabbit mAb	WB	M



SLC25A40 (E9C7Y) Rabbit mAb #38244



PathScan® Tau (GT-38) Sandwich ELISA Kit #44712



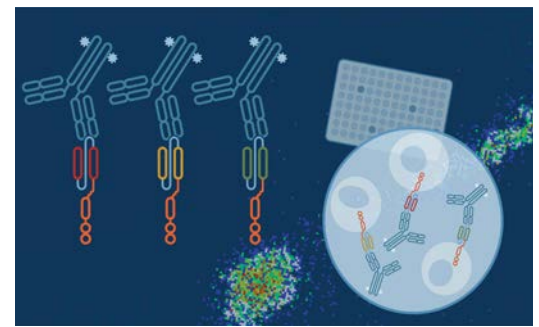
Stress Granule Marker Antibody Sampler Kit #29530

PRODUCT	APPLICATIONS	REACTIVITY
Translational Control		
39489S eIF3B Antibody	WB	H, M, R, Mk
29530T Stress Granule Marker Antibody Sampler Kit	-	-
Ubiquitin and Ubiquitin-like proteins		
88503S Phospho-Ubiquitin (Ser65) (E2)6T Rabbit mAb (Biotinylated)	WB	H, (M, R)

First-to-Market CAR Detection Reagents for CAR-T Research: Anti-CAR Linker mAbs

CST® anti-CAR linker antibodies won The Innovation Award from CiteAb in 2023.

First-to-market anti-CAR linker antibodies can be a versatile detection reagent that could identify and confirm the presence of your CAR, regardless of its antigen specificity. The antibodies are available in a variety of conjugates and can also be custom-conjugated using our custom conjugation services. View below for a full list of products.



PRODUCT	APPLICATIONS	REACTIVITY
Immunology and Inflammation		
18839S CAR-T Cell (G4S Linker) Transduction Efficiency Flow Cytometry Panel	FC-L	H
35139S CAR-T Cell (Whitlow/218 Linker) Transduction Efficiency Flow Cytometry Panel	FC-L	H
71645S G4S Linker (E7O2V) Rabbit mAb	FC-L	All
63670S G4S Linker (E7O2V) Rabbit mAb (BSA and Azide Free)	FC-L	All
50515S G4S Linker (E7O2V) Rabbit mAb (Alexa Fluor® 488 Conjugate)	FC-L	All
90841S G4S Linker (E7O2V) Rabbit mAb (Alexa Fluor® 532 Conjugate)	FC-L	All
18862S G4S Linker (E7O2V) Rabbit mAb (Alexa Fluor® 555 Conjugate)	FC-L	All
39614S G4S Linker (E7O2V) Rabbit mAb (Alexa Fluor® 594 Conjugate)	FC-L	All
69782S G4S Linker (E7O2V) Rabbit mAb (Alexa Fluor® 647 Conjugate)	FC-L	All
40107S G4S Linker (E7O2V) Rabbit mAb (Alexa Fluor® 700 Conjugate)	FC-L	All
17621S G4S Linker (E7O2V) Rabbit mAb (Biotinylated)	FC-L	All
38907S G4S Linker (E7O2V) Rabbit mAb (PE Conjugate)	FC-L	All
57710S Whitlow/218 Linker (E3U7Q) Rabbit mAb	FC-L	All
66159S Whitlow/218 Linker (E3U7Q) Rabbit mAb (BSA and Azide Free)	FC-L	All
55809S Whitlow/218 Linker (E3U7Q) Rabbit mAb (Alexa Fluor® 488 Conjugate)	FC-L	All
25186S Whitlow/218 Linker (E3U7Q) Rabbit mAb (Alexa Fluor® 532 Conjugate)	FC-L	All
85651S Whitlow/218 Linker (E3U7Q) Rabbit mAb (Alexa Fluor® 555 Conjugate)	FC-L	All
61465S Whitlow/218 Linker (E3U7Q) Rabbit mAb (Alexa Fluor® 594 Conjugate)	FC-L	All
69310S Whitlow/218 Linker (E3U7Q) Rabbit mAb (Alexa Fluor® 647 Conjugate)	FC-L	All
72160S Whitlow/218 Linker (E3U7Q) Rabbit mAb (Alexa Fluor® 700 Conjugate)	FC-L	All
32523S Whitlow/218 Linker (E3U7Q) Rabbit mAb (Biotinylated)	FC-L	All
62405S Whitlow/218 Linker (E3U7Q) Rabbit mAb (PE Conjugate)	FC-L	All

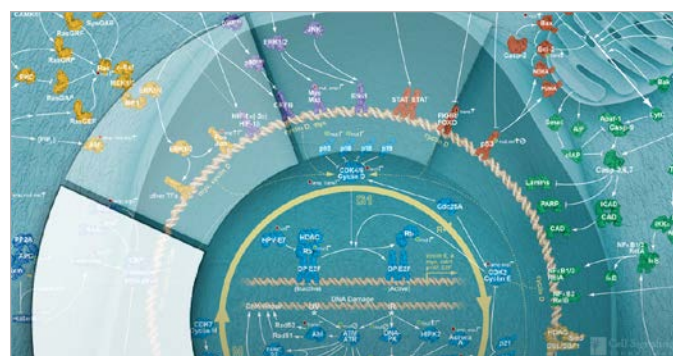
What's New at CST



Parkinson's Disease Resources

CST has partnered with The Michael J. Fox Foundation for Parkinson's Research (MJFF). Visit the new Parkinson's Disease Resource Center to learn more about our partnership with MJFF and explore scientific resources and the latest antibody tools to drive your PD research forward.

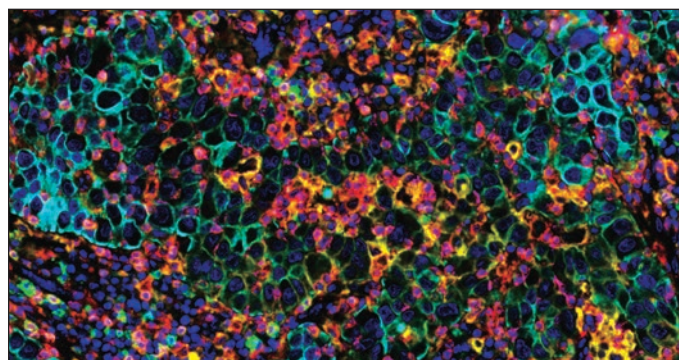
cst-science.com/Q3-2023-info1



eBook: The Hallmarks of Cancer Research Targets

This eBook focuses on the seminal contribution made by Dr. Robert Weinberg and Dr. Douglas Hanahan on "The Hallmarks of Cancer," breaking down the complexity of cancer into ten underlying principles and including key research targets.

cst-science.com/Q3-2023-info2



Solutions for Oncology Therapeutic Discovery

Accelerate drug discovery and development with solutions aligned to your workflows, platforms and technologies, and oncology research. This resource page provides information on targets that could lead to new and more efficacious therapies.

cst-science.com/Q3-2023-info3



Targeting Proteomics for Drug Development

This webinar will provide an overview of how mass spectrometry-based proteomics can be used for drug discovery and development.

cst-science.com/Q3-2023-info4

For Research Use Only. Not for Use in Diagnostic Procedures.

© 2023 Cell Signaling Technology, Inc. CST, Cell Signaling Technology, and XP are registered trademarks of Cell Signaling Technology, Inc. All other trademarks are the property of their respective owners. Visit cellsignal.com/trademarks for more information. 23-PRG-83216-EN

cellsignal.com/newproducts

 **Cell Signaling**
TECHNOLOGY®