



New Products

DECEMBER 2022

EuroClone®

We are continually expanding our portfolio to meet your research needs. Check out the new products released this month!

HOT PRODUCTS

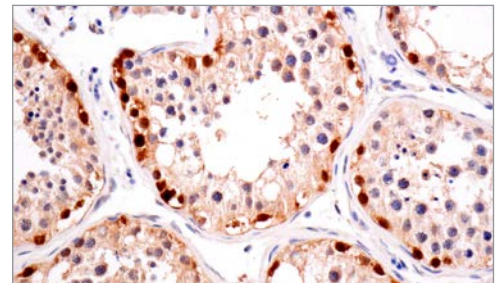
VHL (E3X9K) Rabbit mAb #81292

E3 ligase important for cancer and hypoxia signaling

The VHL (Von Hippel-Lindau) protein is a substrate recognition component of an E3 ubiquitin ligase complex containing Elongin BC (TCEB1 and TCEB2), CUL1, and RBX1.

Loss of VHL protein function results in a dominantly inherited familial cancer syndrome that manifests as angiomas of the retina, hemangioblastomas of the central nervous system, renal clear cell carcinomas, and pheochromocytomas. Under normoxic conditions, VHL directs the ubiquitylation and subsequent proteasomal degradation of the HIF-1 α , maintaining very low levels of HIF-1 α in the cell. Cellular exposure to hypoxic conditions, or loss of VHL protein function, results in increased HIF-1 α protein levels and increased expression of HIF-induced gene products, many of which are angiogenesis factors such as VEGF. Thus, loss of VHL protein function is believed to contribute to the formation of highly vascular neoplasias.

KEYWORDS: Ubiquitin/Proteasome, Proteolysis, Cancer, Hypoxia signaling



IHC-P: IHC analysis of paraffin-embedded normal human testis using #81292.

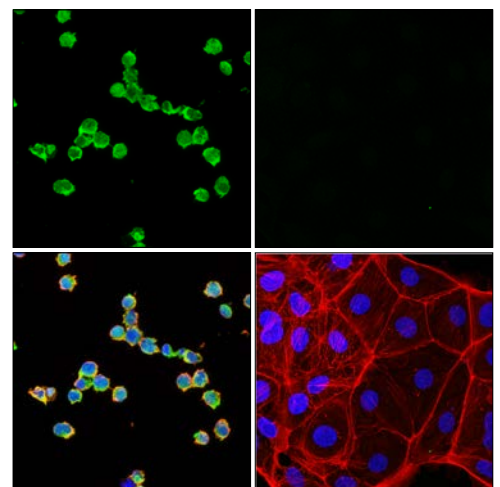
TFEB (E4I8R) Mouse mAb #91767

Transcription factor important for lysosome and autophagy

TFEB is a transcription factor of the Myc-related, bHLH leucine-zipper family member. TFEB specifically recognizes and binds the CLEAR box (GTCACGTGAC) of lysosomal and autophagy genes, resulting in the upregulated expression of genes involved in lysosome biogenesis and function, and regulation of autophagy. TFEB is activated in response to nutrient deprivation, stimulating translocation to the nucleus where it forms homo- or heterooligomers with other members of the MiTF subfamily and resulting in upregulation of autophagosomes and lysosomes.

Recently, it has been shown that TFEB is a component of mTORC1, which regulates the phosphorylation and nuclear translocation of TFEB in response to cellular starvation and stress. During normal growth conditions, TFEB is phosphorylated at Ser211 in an mTORC1-dependent manner. Phosphorylation promotes association of TFEB with 14-3-3 family proteins and retention in the cytosol. Inhibition of mTORC1 results in a loss of TFEB phosphorylation, dissociation of the TFEB/14-3-3 complex, and rapid transport of TFEB to the nucleus where it increases transcription of CLEAR and autophagy genes.

KEYWORDS: Lysosome, Autophagy, Nutrient

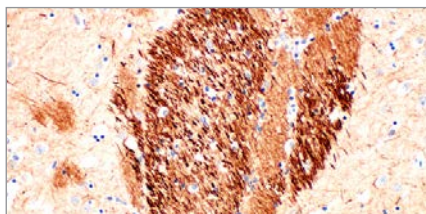


IF-IC: Confocal IF analysis of SU-DHL-4 cells (left, positive) and HCC827 cells (right, negative) using #91767 (green), actin filaments (red), and DAPI #4083 (blue).

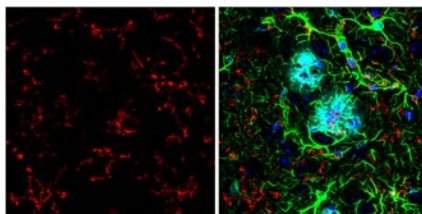
www.cellsignal.com



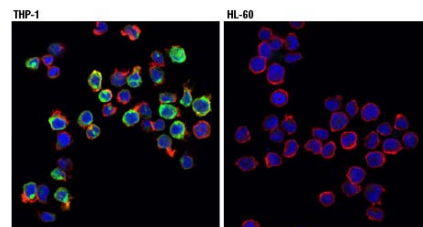
Cell Signaling
TECHNOLOGY®



Neurofilament-M (E7Y8W) Mouse mAb #53086



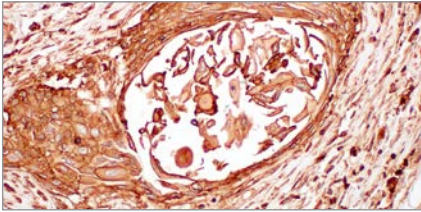
TMEM119 (E4B9S) Mouse mAb #98778



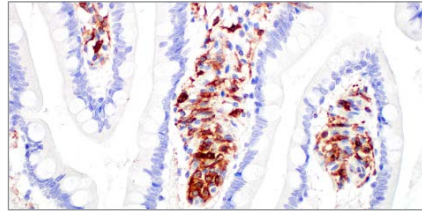
Human TREM2 Activity Antibody Sampler Kit #92114

PRODUCT	APPLICATIONS	REACTIVITY	CARRIER-FREE
Adhesion/ECM			
59648SF Claudin-6 (E7U2O) XP® Rabbit mAb (BSA and Azide Free)	WB, IHC-LB, IHC-P	H	●
83220S Integrin α1/CD49α (E5D6Q) Rabbit mAb (Alexa Fluor® 488 Conjugate)	FC-L	H	
66653S Integrin α1/CD49α (E5D6Q) Rabbit mAb (Alexa Fluor® 647 Conjugate)	FC-L	H	
75390S PROS1 (E7F5H) Rabbit mAb	WB	H	
36476SF PSA/KLK3 (D11E1) XP® Rabbit mAb (BSA and Azide Free)	WB, IHC-P	H	●
Apoptosis			
66157SF Mcl-1 (D2W9E) Rabbit mAb (BSA and Azide Free)	WB, IF-IC, FC-FP	H, M, R	●
69006SF N-Myc (D4B2Y) Rabbit mAb (BSA and Azide Free)	WB, IHC-P	H, M, (R)	●
Ca, cAMP and Lipid Signaling			
77313S AKAP11 (E9E6W) Rabbit mAb	WB, IP	H, M, R	
Cell Cycle / Checkpoint Control			
39263S DOCK8 (E5Y9C) Rabbit mAb	WB, IP	H, M	
63276S Phospho-Rb (Ser811) (E7F2P) Rabbit mAb	WB	H	
Chromatin Regulation / Nuclear Function			
25069S CBX2 (E3N6A) Rabbit mAb	WB, IP, ChIP, ChIP-seq, C&R	H, M, R, Mk	
73014S CTCF (D31H2) XP® Rabbit mAb (Alexa Fluor® 555 Conjugate)	IF-F, IF-IC	H, M, R, Mk, (B, Hr)	
41490S HAT1 (E7Y8Q) Rabbit mAb	WB, ChIP	H, M, R, Mk	
80523T N6-Methyladenosine (m6A) Binding Protein Antibody Sampler Kit	—	—	
83283S PRMT8 (E2R7O) Rabbit mAb	WB	M, (H)	
Cytoskeletal Signaling			
74874S Cofilin (D3F9) XP® Rabbit mAb (Alexa Fluor® 555 Conjugate)	IF-IC	H, M, R, Mk, Dg	
82007S DYNLL1/LC8 (E6W7R) Rabbit mAb	WB	H, M, R	
77763SF α-Tubulin (1H10) Rabbit mAb (BSA and Azide Free)	WB, IHC-P, IF-IC, FC-FP	H, M, R, Mk, Dm, Z, B, Pg, (Dg)	
Developmental Biology			
23083SF CDX2 (D11D10) Rabbit mAb (BSA and Azide Free)	WB, IHC-P, IF-IC	H	
68084SF LEF1 (C12A5) Rabbit mAb (BSA and Azide Free)	WB, IHC-P, IF-IC	H, M, R	
28002T Pancreatic Marker IHC Antibody Sampler Kit	—	—	
19477S Sall4 (E63) Mouse mAb	IHC-P	H	
46382S TCF1/TCF7 (C63D9) Rabbit mAb (Alexa Fluor® 532 Conjugate)	FC-FP	H, M	
99188S TLE3 (E4F3Y) Rabbit mAb	WB, IP, IF-IC	H, M, R, Mk	
Infectious Disease			
73039S MERS-CoV Nucleocapsid Protein Antibody	WB	Vir	
MAP Kinase Signaling			
16780S Phospho-MEK1/2 (Ser221) (166F8) Rabbit mAb (Alexa Fluor® 647 Conjugate)	FC-FP	H, M, R, Mk, (Dg)	
48735S Phospho-p44/42 MAPK (Erk1/2) (Thr202/Tyr204) (197G2) Rabbit mAb (Alexa Fluor® 532 Conjugate)	FC-FP	H, M, R, Mk, Mi, Dm, Z, Pg	
56310S SLMAP (E5F4Y) Rabbit mAb	WB, IP	H, M, R, Mk	
Metabolism			
81977SF 4F2hc/CD98 (D3F9D) XP® Rabbit mAb (BSA and Azide Free)	WB, IHC-P, IF-IC, FC-FP, FC-L	H	●
31835S Arginase-1 (D4E3M™) XP® Rabbit mAb (Alexa Fluor® 700 Conjugate)	FC-FP	H, M, R	
38069S C-Peptide (E7U7F) XP® Rabbit mAb	IHC-P	H	
38069T			
51634S C-Peptide (E9C4P) Rabbit mAb	IHC-P, IF-F	M, R	
85925SF GAPDH (14C10) Rabbit mAb (BSA and Azide Free)	WB, IHC-P, IF-IC, FC-FP	H, M, R, Mk, B, Pg, (Pg)	●
85934S Glutaminase-2/GLS2 (E9C7V) Rabbit mAb	WB	H	
56823SF Insulin (C27C9) Rabbit mAb (BSA and Azide Free)	IHC-P, IF-F, IF-IC, FC-FP	H, M, R	●
32683S LAT1/SLC7A5 (E9O4D) Rabbit mAb	WB, IP, IF-IC	H	
57411S LPCAT1 (E4V4B) Rabbit mAb	WB, IP, IHC-P	H	
29302SF Proglucagon (D16G10) XP® Rabbit mAb (BSA and Azide Free)	IHC-P, IF-F	H, M, R	●

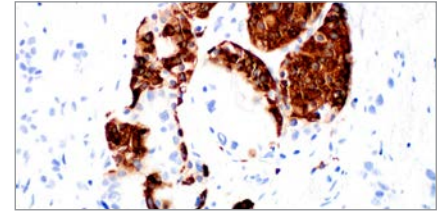




MHC Class I (EMR8-5) Mouse mAb #88274



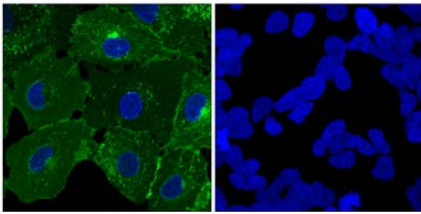
Siglec-10 (E1D7S) XP® Rabbit mAb #74799



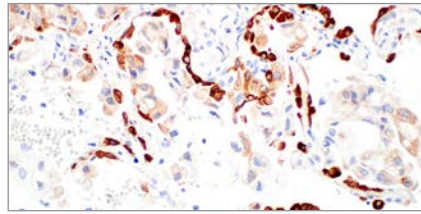
C-Peptide (E7U7F) XP® Rabbit mAb #38069

PRODUCT	APPLICATIONS	REACTIVITY	CARRIER-FREE
Immunology and Inflammation			
37953SF ASC/TMS1 (D2W8U) Rabbit mAb (Mouse Specific) (BSA and Azide Free)	WB, IHC-P, IF-F, IF-IC, FC-FP	M	●
42879SF Btk (D6T2C) Mouse mAb (BSA and Azide Free)	WB, FC-FP	H, M	●
19673SF CD7 (E4G1Q) XP® Rabbit mAb (BSA and Azide Free)	WB, IHC-LB, IHC-P	H	●
36769SF CD11a (E5S9K) Rabbit mAb (BSA and Azide Free)	WB, IHC-P	H	●
87823SF CD28 (D2Z4E) Rabbit mAb (BSA and Azide Free)	WB, IF-F	H, M	●
80519S CD84 (E4F2N) Rabbit mAb	WB, IP	M	
75126S CD235a/Glycophorin A (JC159) Rabbit mAb	IHC-P	H	
66110SF CRACC/SLAMF7/CD319 (E5C4M) Rabbit mAb (BSA and Azide Free)	WB, IHC-LB, IHC-P	H	●
16049S Crry (E9M7T) Rabbit mAb	IF-F, IF-IC	M	
78862S CXCR5 (E3G3A) Rabbit mAb	FC-L	M	
23042S Dectin-1 Antibody	WB	M	
38013S Phospho-Fgr (Tyr412) (E3R7L) Rabbit mAb	WB	H	
63670SF G4S Linker (E7O2V) Rabbit mAb (BSA and Azide Free)	FC-L	All	●
71325SF Galectin-9 (D9R4A) XP® Rabbit mAb (BSA and Azide Free)	WB, IHC-LB, IHC-P, FC-FP	H	●
18670SF COS (E5F7E) Rabbit mAb (BSA and Azide Free)	WB, IHC-P, IF-F	M, R	●
92633S IFIT2 Antibody	WB	H	●
61166SF Phospho-IRF-3 (Ser396) (D6O1M) Rabbit mAb (BSA and Azide Free)	WB, IF-IC, FC-FP	H, M, R	
60615S IRF-6 (E5C5D) Rabbit mAb	WB, IP, IF-IC	H	●
88077S Phospho-LAT (Tyr161) (E9Q2R) Rabbit mAb	WB, IP	H	
40415T MAVS Signalosome Antibody Sampler Kit	—	—	
88274S MHC Class I (EMR8-5) Mouse mAb	WB, IHC-P, FC-FP	H	
87008SF MIF (E7T1W) Rabbit mAb (BSA and Azide Free)	WB, IHC-P	H, M, R	
83962S Phospho-NF-κB p65 (Ser536) (93H1) Rabbit mAb (Alexa Fluor® 750 Conjugate)	FC-FP	H, M, R, Hm, Mk, Pg, (Dg)	●
41317SF Phospho-NF-κB p105 (Ser932) (178F3) Rabbit mAb (IHC Specific) (BSA and Azide Free)	IHC-P	H	
66115SF NTAL/LAB (D712B) Rabbit mAb (BSA and Azide Free)	WB, IF-IC, FC-FP	H	●
64714SF PD-L2 (D6L5A) Rabbit mAb (BSA and Azide Free)	IHC-LB, IHC-P	M, (Pg)	●
88499S PDE12 (E2V7J) Rabbit mAb	WB	H, M, (B, Dg, Pg)	●
82000S c-Rel (E8Z5Y) XP® Rabbit mAb	WB, IP, IHC-P, IF-IC, FC-FP	H	
82000T			
74799S Siglec-10 (E1D7S) XP® Rabbit mAb	WB, IHC-P	H	
74799T			
76285S Phospho-Stat1 (Tyr701) (S8D6) Rabbit mAb (Alexa Fluor® 700 Conjugate)	FC-FP	H, M	
16185S Phospho-Stat3 (Tyr705) (D3A7) XP® Rabbit mAb (Alexa Fluor® 700 Conjugate)	FC-FP	H, M, R, Mk, (Hm, B, Pg, Hr, Rab)	
50804SF Phospho-Stat3 (Ser727) (D4X3C) Rabbit mAb (BSA and Azide Free)	IF-IC, FC-FP	H, (M, R)	●
42353SF Phospho-Stat4 (Tyr693) (D2E4) Rabbit mAb (BSA and Azide Free)	WB, IF-IC, FC-FP	H, (M, R, Mk, Pg)	●
72712SF Phospho-Stat5 (Tyr694) (D47E7) XP® Rabbit mAb (BSA and Azide Free)	WB, IF-IC, FC-FP	H, M, (R, B)	●
46186SF Phospho-Stat6 (Tyr641) (D8S9Y) Rabbit mAb (BSA and Azide Free)	WB, IF-IC, FC-FP	H, M, (R)	●
71543SF TBK1/NAK (E8I3G) Rabbit mAb (BSA and Azide Free)	WB, IF-IC, FC-FP	H, M, R	●
71010SF TIM-1 (E1R9N) Rabbit mAb (BSA and Azide Free)	WB, IHC-P	H	●
66159SF Whitlow/218 Linker (E3U7Q) Rabbit mAb (BSA and Azide Free)	FC-L	All	●
33750S ZAP (E5V4D) Rabbit mAb	WB	H, M, R	
51593S ZAP (E7E8D) Rabbit mAb	WB, IP	H	

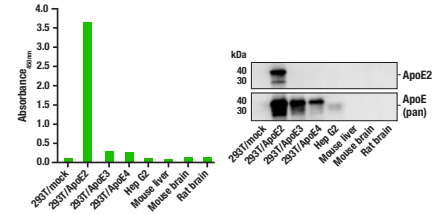




LAT1/SLC7A5 (E9O4D) Rabbit mAb #32683



LPCAT1 (E4V4B) Rabbit mAb #57411

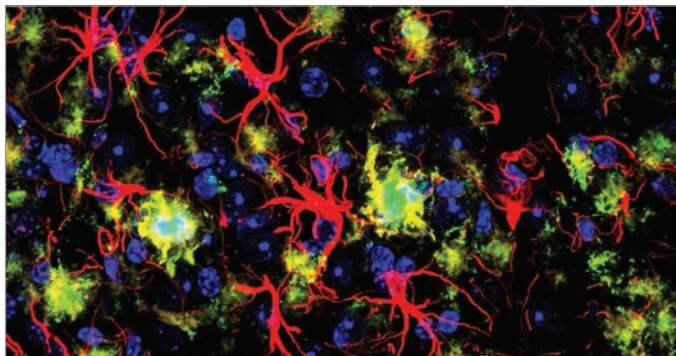


PathScan® ApoE2 Sandwich ELISA Kit #91899

PRODUCT	APPLICATIONS	REACTIVITY	CARRIER-FREE
Motif Antibodies			
59524S PTMScan® Control Peptides Phospho-Enrichment IMAC	–	–	
Neuroscience			
91899C PathScan® ApoE2 Sandwich ELISA Kit	ELISA	H	
95995S Phospho-CREB (Ser133) (87G3) Rabbit mAb (PE-Cy7® Conjugate)	FC-FP	H, M, R, (Z)	
85068S KISS1 (E4N8S) Rabbit mAb	WB, IF-IC	H	
83820S LAPTM5 (E7D5O) Rabbit mAb	WB, IHC-P	M	
53086S Neurofilament-M (E7Y8W) Mouse mAb	WB, IHC-P, IF-F, IF-IC	H, M, R	
34745S Neurofilament-M (E9N8K) Mouse mAb	WB, IF-F, IF-IC	H, M, R	
46333SF p75NTR (D4B3) XP® Rabbit mAb (BSA and Azide Free)	WB, IF-IC, FC-L	H, M, R	●
15641S PTPRZ1 (E7C8Z) Rabbit mAb	IHC-P	H, M	
26278S β-Synuclein (E9R3I) Rabbit mAb	WB, IP	H, M, R	
98778S TMEM119 (E4B9S) Mouse mAb	IF-F	M	
59621S TREM2 (E9O9F) Rabbit mAb	WB	M	
92114T Human TREM2 Activity Antibody Sampler Kit	–	H	
98240T Mouse TREM2 Activity Antibody Sampler Kit	–	M	
Nuclear Receptor Signaling			
19632C PathScan® Phospho-Androgen Receptor (Ser258) Sandwich ELISA Kit	ELISA	H	
PI3K / Akt Signaling			
26580S Phospho-Akt (Ser473) (D9E) XP® Rabbit mAb (Alexa Fluor® 532 Conjugate)	FC-FP	H, M, R, Hm, Mk, Dm, Z, B, (C, X, Dg, Pg)	
Protein Folding and Trafficking			
63411SF BiP (C50B12) Rabbit mAb (BSA and Azide Free)	WB, IHC-P, FC-FP	H, M	●
51509S GAK (E7W7Z) Rabbit mAb	WB, IP	H, M, R, Mk	
RTK			
93186SF EGF Receptor vIII (D6T2Q) XP® Rabbit mAb (BSA and Azide Free)	IHC-P, IF-IC	H	●
19783SF HER2/ErbB2 (29D8) Rabbit mAb (BSA and Azide Free)	WB, IHC-P, IF-IC, FC-FP	H, M, (R)	●
48019SF Met (L6E7) Mouse mAb (BSA and Azide Free)	IF-IC, FC-FP, FC-L	H	●
Translational Control			
91767S TFEB (E418R) Mouse mAb	WB, IP, IF-IC	H	
97935S Phospho-S6 Ribosomal Protein (Ser235/236) (D57.2.2E) XP® Rabbit mAb (Alexa Fluor® 532 Conjugate)	FC-FP	H, M, R, Mk, Mi, Sc, (C, Pg)	
Ubiquitin and Ubiquitin-like Proteins			
60702S UCHL1 (E6B8E) Mouse mAb	WB, IF-F, IF-IC	H, M, R, Mk	
81292S VHL (E3X9K) Rabbit mAb	IHC-LB, IHC-P	H, M	
Related Products			
98605SF Cas9 (S. pyogenes) (E7MIH) XP® Rabbit mAb (BSA and Azide Free)	WB, IHC-P, IF-F, IF-IC, FC-FP	All	●
48713S Human G-CSF Recombinant Protein	–	–	
72306S Human GDF5 Recombinant Protein	–	–	
86907S Human/Mouse/Rat GDF11 Recombinant Protein	–	–	
34117S Human Growth Hormone Recombinant Protein	–	–	
86124SF HA-Tag (C29F4) Rabbit mAb (BSA and Azide Free)	WB, IHC-P, IF-IC, FC-FP	All	
58009SF V5-Tag (D3H8Q) Rabbit mAb (BSA and Azide Free)	WB, IF-IC, FC-FP	All	●
40099SF V5-Tag (E9H8O) Mouse mAb (BSA and Azide Free)	WB, IF-IC, FC-FP	All	●
44695S Human WISP2 Recombinant Protein	–	–	●



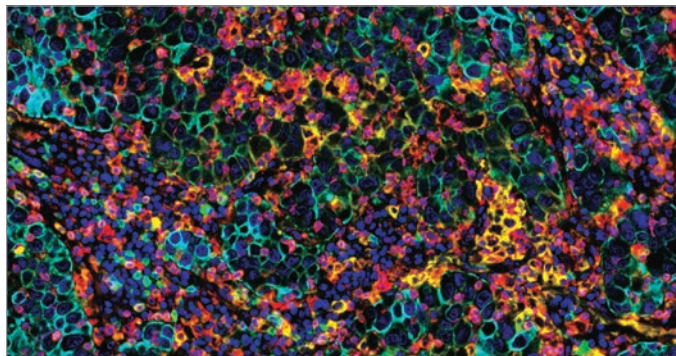
What's New at CST



Solutions for Neurodegeneration Drug Discovery

Download **Solutions for Advancing Neurodegeneration Therapeutics Discovery** and learn how our broad antibody portfolio, key readouts, ready-to-use ELISA, and cellular kits can help you develop new, more efficacious therapies.

www.cst-science.com/dec22-1



Solutions for Oncology Drug Development — Put our experience to work for you

CST scientists are biology, application, and therapeutic research experts who are well versed in the latest therapeutic approaches in oncology. Learn more about how our antibody products, services, and areas of expertise can help streamline your discoveries.

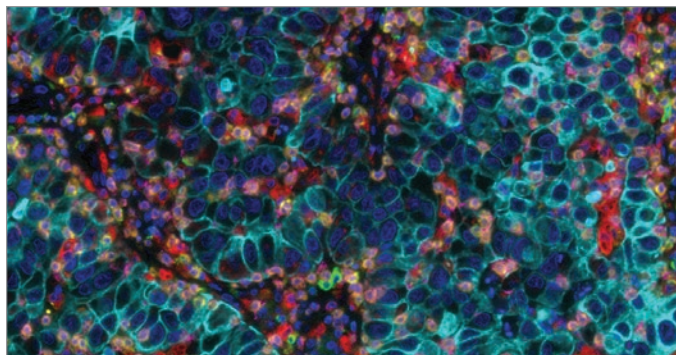
www.cst-science.com/dec22-2



Disease-Related Signaling Pathways

Download to access information about the drivers of neurodegeneration, related targets, and a handy neuronal and glial cell marker atlas.

www.cst-science.com/dec22-3



Get Your Answer Faster with FastScan ELISA Kits

Our rigorously validated, ready-to-go kits use a simple protocol that easily integrates into your current processes, allowing you to rapidly and accurately detect targets of interest in your samples.

www.cst-science.com/dec22-4

For Research Use Only. Not For Use in Diagnostic Procedures.

© 2022 Cell Signaling Technology, Inc. CST, Cell Signaling Technology, and XP are registered trademarks of Cell Signaling Technology, Inc. All other trademarks are the property of their respective owners. Visit cellsignal.com/trademarks for more information. 22-LRG-461755-EN

www.cellsignal.com



Cell Signaling
TECHNOLOGY®